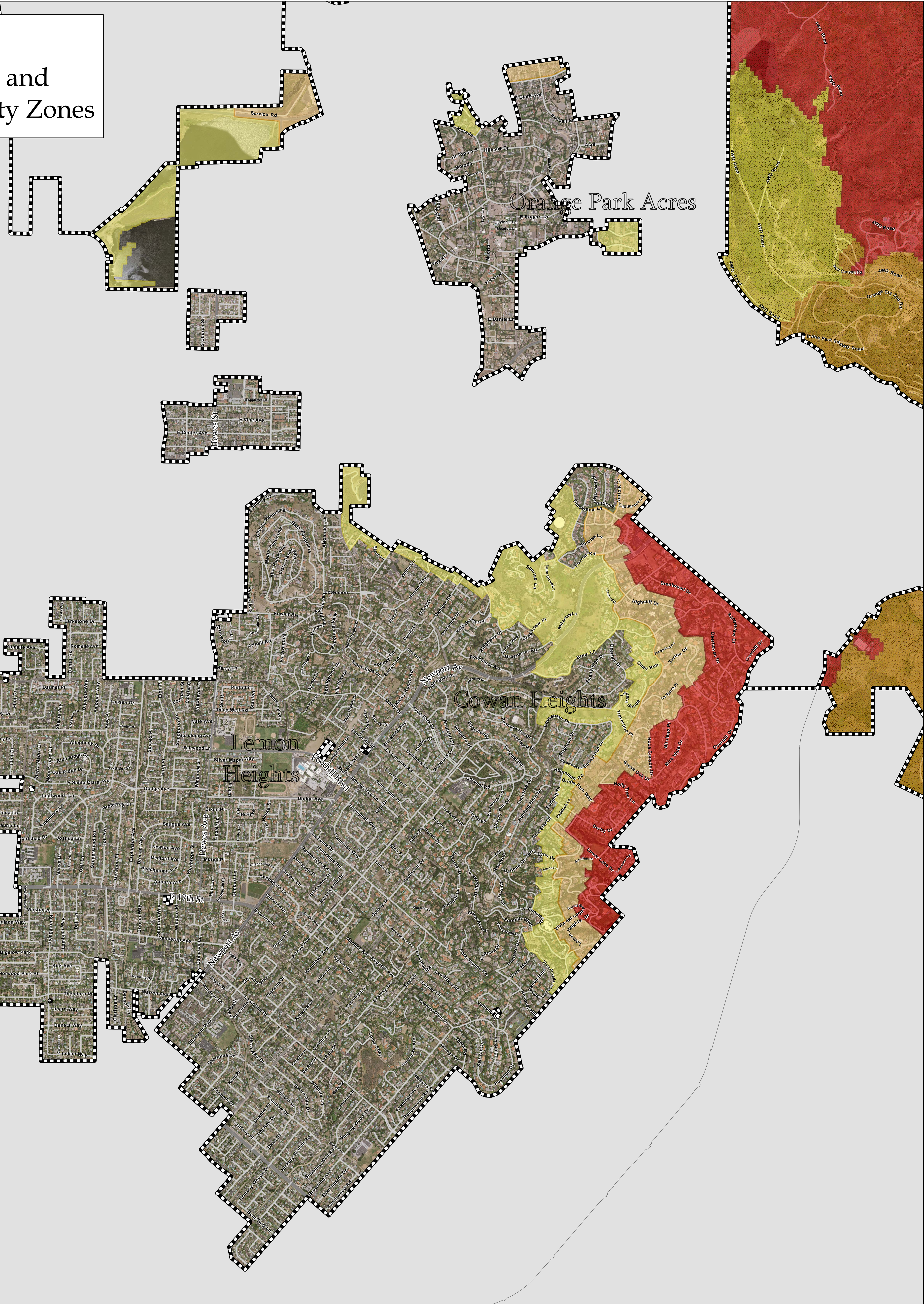




# Lemon Heights, Cowan Heights, Orange Park Acres and other Unincorporated Areas Ember/ Fire Hazard Severity Zones




\* Ember/ Fire Hazard Severity Zones

-  Adopted Very High FHSZ (02/28/2012)  
 Recommended Ember Zone 2/ High  
 Recommended Ember Zone 1/ Moderate



\* State Responsibility Area

-  Adopted Very High FHSZ  
 Adopted High FHSZ  
 Adopted Moderate FHSZ

Incorporated Cities

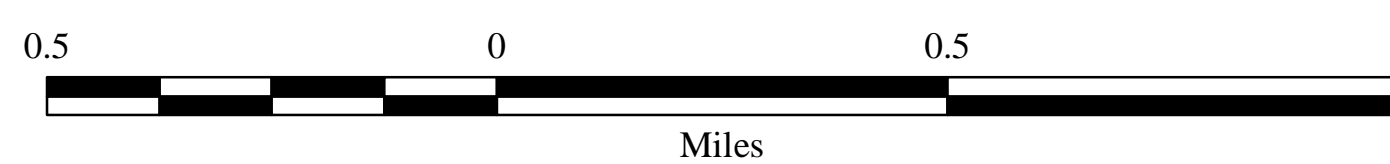
 Unincorporated

— Major Roads

Information Technology Division - Geographic Information Systems

Information shown hereon is a compilation of data from sources of varying accuracy and is provided as a convenience to the user. The Orange County Fire Authority does not guarantee its accuracy and completeness. It is the user's responsibility to verify all information to their own satisfaction.

September 06, 2012



\* On 02/28/2012 the Board of Supervisors of Orange County officially locally adopted the Very High Fire Hazard Severity Zones within the unincorporated Local Responsibility Area (LRA).  
All other LRA zones are shown for informational purposes only.

**On 11/07/2011, Cal Fire adopted the Very High, High, and Moderate Fire Hazard Severity Zones for the State Responsibility Areas (SRA).**

**This map helps homeowners and developers determine whether exterior wildfire exposure construction standards found in the California Building Code and California Residential Code apply to their residential or commercial construction project.**

**Reference the legend on each map to guide you in decision making for your project. For further information, please contact the City or County Building Department.**