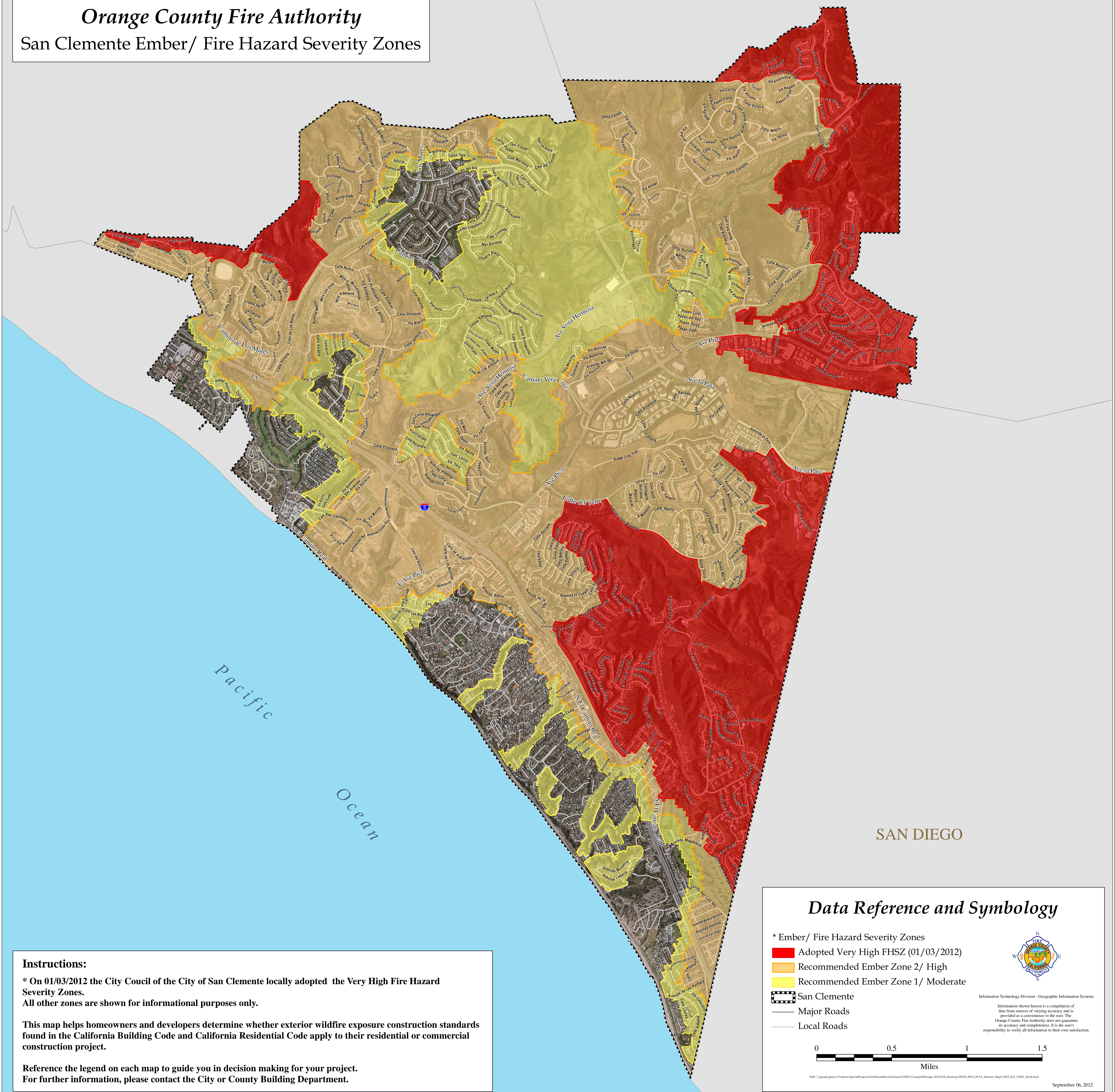


Orange County Fire Authority
San Clemente Ember/ Fire Hazard Severity Zones




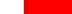
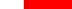

**Instructions:**

* On 01/03/2012 the City Council of the City of San Clemente locally adopted the Very High Fire Hazard Severity Zones.
All other zones are shown for informational purposes only.

This map helps homeowners and developers determine whether exterior wildfire exposure construction standards found in the California Building Code and California Residential Code apply to their residential or commercial construction project.

**Reference the legend on each map to guide you in decision making for your project.
For further information, please contact the City or County Building Department.**

Data Reference and Symbology

- * Ember/ Fire Hazard Severity Zones
-  Adopted Very High FHSZ (01/03/2012)
-  Recommended Ember Zone 2/ High
-  Recommended Ember Zone 1/ Moderate
-  San Clemente
-  Major Roads
-  Local Roads



Information Technology Division - Geographic Information Systems

Information shown hereon is a compilation of data from sources of varying accuracy and is provided as a convenience to the user. The Orange County Fire Authority does not guarantee its accuracy and completeness. It is the user's responsibility to verify all information to their own satisfaction.



Path: \\gis\gis\Projects\SpecialProjects\FireHazardSeverityZones\FHSZ\CountyOfOrange_20110718_meeting\MXD\2012_OCFA_Internet_Maps\2012_SCL_FHSZ_34x34.mxd

September 06, 2013