

Dana Point Ember/ Fire Hazard Severity Zones

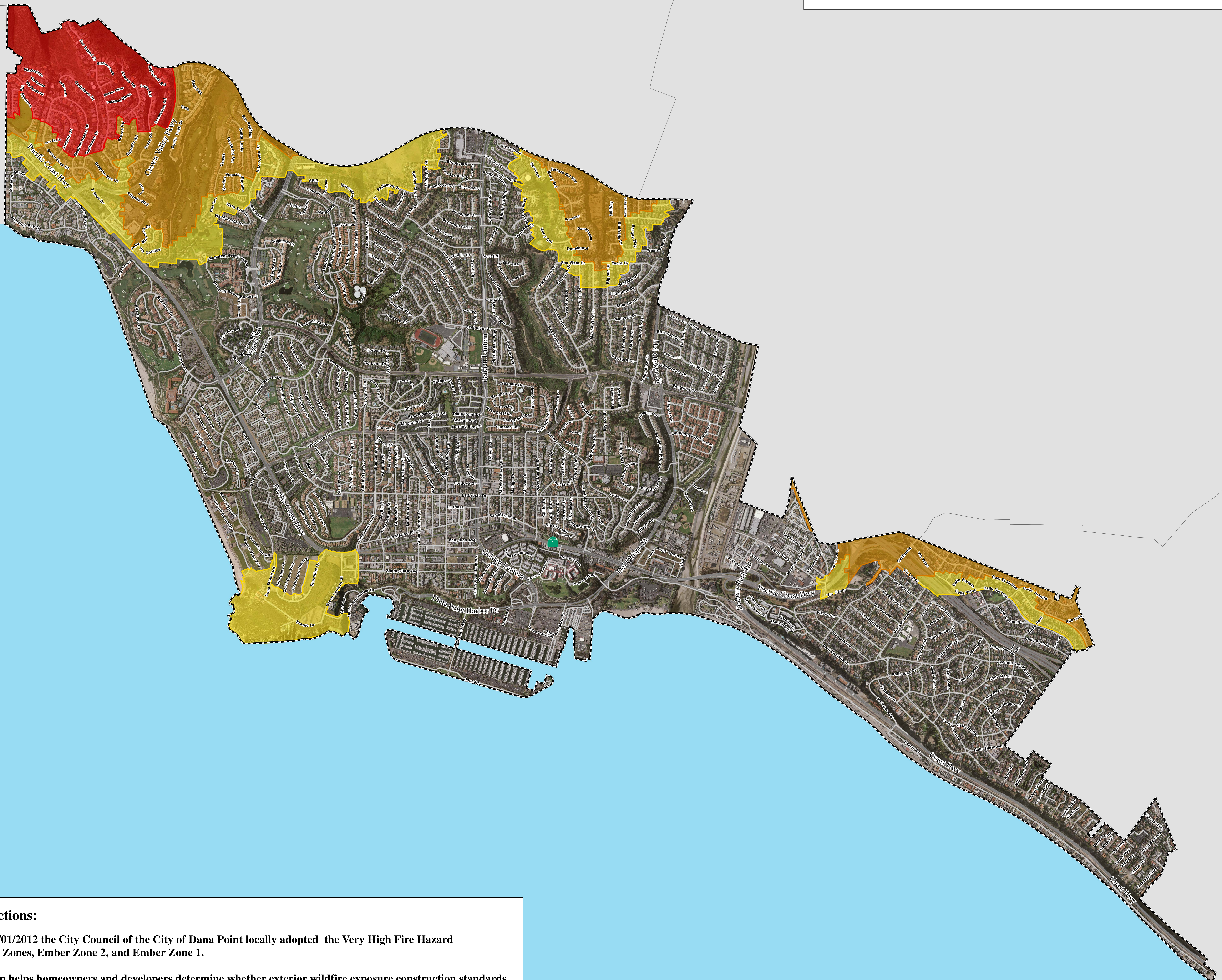
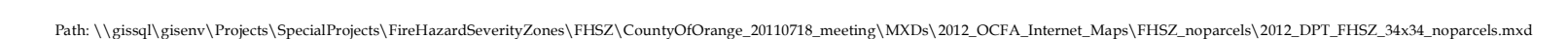
* Ember/ Fire Hazard Severity Zones

- 

Information Technology Division - Geographic Information Systems

Information shown hereon is a compilation of data from sources of varying accuracy and is provided as a convenience to the user. The Orange County Fire Authority does not guarantee its accuracy and completeness. It is the user's responsibility to verify all information to their own satisfaction.

September 06, 2012



*** On 05/01/2012 the City Council of the City of Dana Point locally adopted the Very High Fire Hazard Severity Zones, Ember Zone 2, and Ember Zone 1.**

Reference the legend on each map to guide you in decision making for your project. For further information, please contact the City or County Building Department.